

CONNECTDEC Type AKUDEC PE Special

SEMI FLEXIBLE SOUND ATTENUATORS

The **CONNECTDEC TYPE AKUDEC PE Special** semi flexible sound attenuator consists of a heavy multiple layered corrugated perforated aluminium innerduct and provided with a Polyethylene outer jacket. The space between the inner and outer duct is filled with 25mm sound absorbing material. The duct is standard fitted with metal sleeves at both ends to fit to any rigid ductwork or appliance instantly. One side is equipped with 3 flanges for quick connection/attaching to e.g. dry-wall.

Also there is a 50x50cm moist-protection sheet.

Type 3) Female – Female Special connection

THE SOLUTION to over bridge inaccuracy in measurements.
Saves installation time and material

APPLICATIONS

- Can be combined immediately with our air valves (e.g. DAV or DVSC)
- Air supply systems
- Air conditioning systems
- Insertion loss damper
- Sound attenuator
- Decreasing sound of machines



SPECIFICATIONS

Article code:	AKU3SPE2{Ø}/L
Temperature range:	
Inner duct:	-30 °C to 250 °C
Outer jacket	-30 °C to 90 °C
Operating pressure:	up to +2000 Pa
Operating air velocity:	max. 10 m/s
Min. bending radius:	1 x Ø + 25mm
Standard diameter range:	100 + 125 mm
Standard length:	0,80 mtr

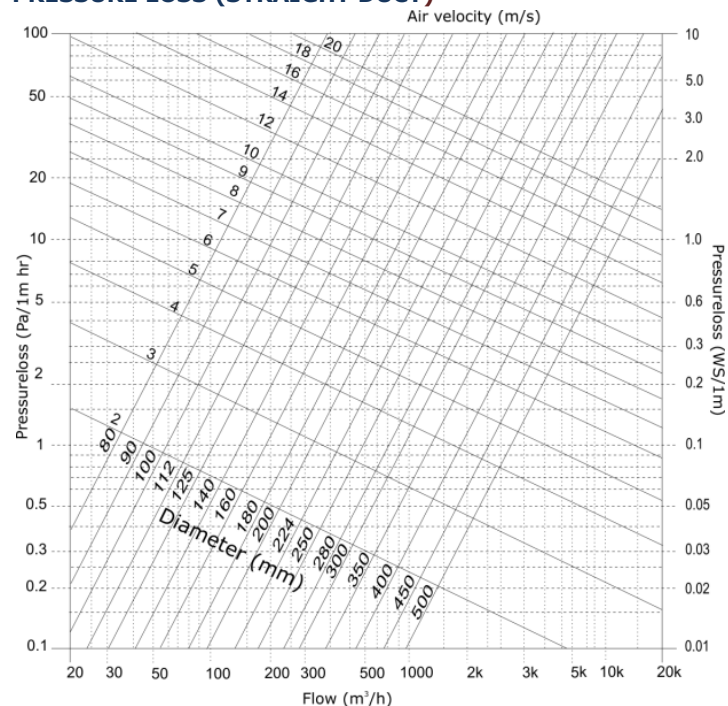
CONSTRUCTION

Inner duct:	Aluminium
Barrier	Nonwoven cloth
Glass wool blanket:	25mm, 16kg/m³
Outer jacket:	Polyethylene
R-value glass wool:	0.65 m² K/W (ASTM C177-76)
Appearance:	aluminium

CLASSIFICATIONS

EU (EN 13501-1):	
Innerduct:	A1

PRESSURE LOSS (STRAIGHT DUCT)



The **CONNECTDEC TYPE AKUDEC PE SPECIAL** fulfills all the requirements and are classified as specified within EN 13180: *Ventilation for buildings – Ductwork - Dimensions and mechanical requirements for flexible ducts.*

The **CONNECTDEC TYPE AKUDEC PE SPECIAL** is also available, on request, with a 50 mm glass wool layer, the article number is: **AKU35SPE2{Ø}** R-value glass wool: 1.3 (50 mm) m² K/W (ASTM C177-76).

LIABILITY:

The information contained in this brochure was current on the publication date. DEC INTERNATIONAL reserves the right to make changes in details at any time without prior notice. In order to avoid misunderstandings, any interested party is advised to contact DEC INTERNATIONAL checking for any changes in materials and/or information after this brochure was published.

PLEASE NOTICE:

The consultant is responsible for the actual installation and mounting of the product. The mentioned values with respect to temperatures are not appropriate to be used to determine the physical properties. These properties are also dependent on humidity and the temperature of the air inside and outside of the H.V.A.C. system.

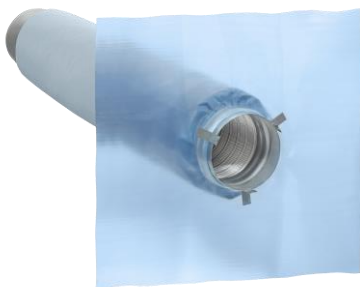
TRADEMARKS:

CONNECTDEC, AKUDEC, the DEC logo and DEC International are trademarks, or registered trademarks of Dutch Environment Corporation BV in the Netherlands and/or other countries.

RESTRICTIONS:

The CONNECTDEC ducts are not suitable for discharging combustion products from open fireplaces and oil-fired boilers. Neither are the ducts suitable for transporting air with a high concentration of acid and base.



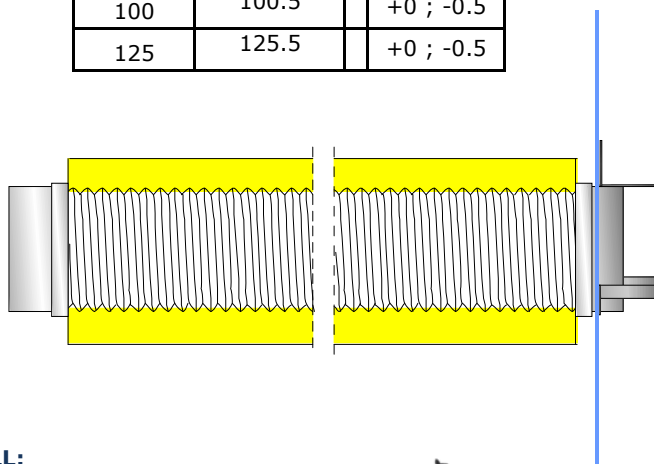


CONNECTDEC Type AKUDEC PE Special

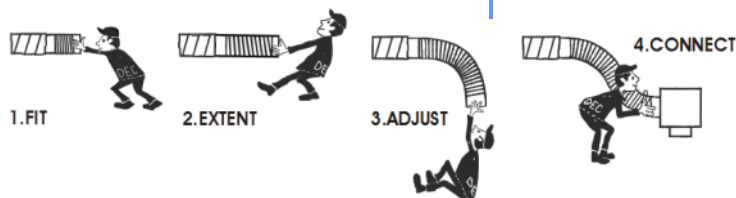
SEMI FLEXIBLE SOUND ATTENUATORS

DIMENSIONS Metal sleeves

According to EN-1506		
D _{nom} (mm)	D _{female} (mm)	Tol.
100	100.5	+0 ; -0.5
125	125.5	+0 ; -0.5



HOW TO INSTALL:



SOUND ATTENUATION According: ISO 7235

AKUDEC PE 25mm (Test report nr. A1672-1 Peutz bv - The Netherlands)										
D _n (mm)	L (m)	Attenuation, dB - Mid-frequency, Hz								D _i (dB)
		63	125	250	500	1000	2000	4000	8000	
100	0.5	11.9	11.4	22.6	26.8	22.1	29.2	25.8	16.7	26
125	0.5	6.3	7.1	15.2	19.9	20.3	26.1	17.1	12.9	22
D _n (mm)	L (m)	Attenuation, dB - Mid-frequency, Hz								D _i (dB)
		63	125	250	500	1000	2000	4000	8000	
100	1.0	9.5	14.5	28.6	37.4	35.6	39.8	44.3	29.5	36
125	1.0	12.4	20.1	33.6	29.8	29.5	33.6	32.1	23.6	32

D_i = Average attenuation

LIABILITY:

The information contained in this brochure was current on the publication date. DEC INTERNATIONAL reserves the right to make changes in details at any time without prior notice. In order to avoid misunderstandings, any interested party is advised to contact DEC INTERNATIONAL checking for any changes in materials and/or information after this brochure was published.

PLEASE NOTICE:

The consultant is responsible for the actual installation and mounting of the product. The mentioned values with respect to temperatures are not appropriate to be used to determine the physical properties. These properties are also dependent on humidity and the temperature of the air inside and outside of the H.V.A.C. system.

TRADEMARKS:

CONNECTDEC, AKUDEC, the DEC logo and DEC International are trademarks, or registered trademarks of Dutch Environment Corporation BV in the Netherlands and/or other countries.

RESTRICTIONS:

The CONNECTDEC ducts are not suitable for discharging combustion products from open fireplaces and oil-fired boilers. Neither are the ducts suitable for transporting air with a high concentration of acid and base.

